

ALMACO

*SEED RESEARCH
SOLUTIONS LEADER*

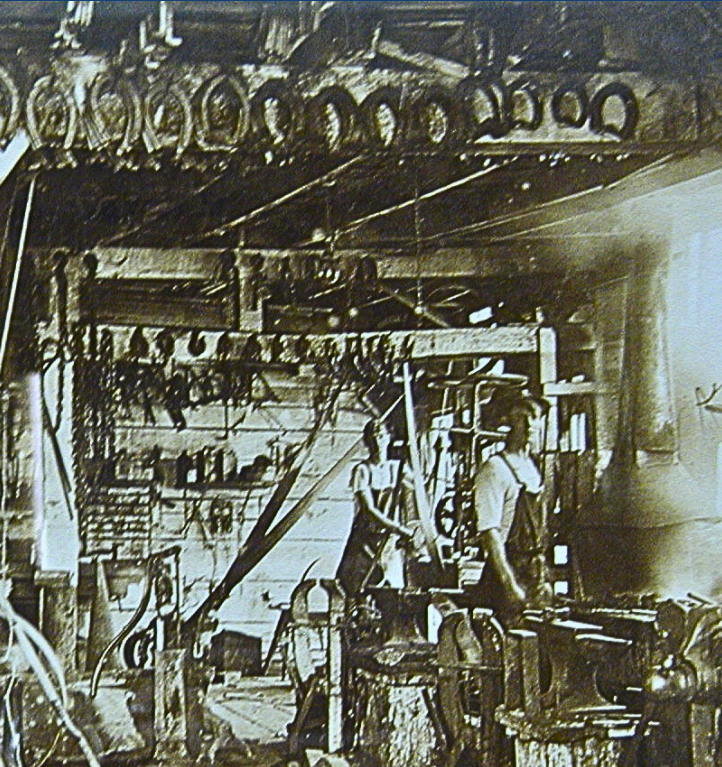




**INTEGRITY
DILIGENCE
REPUTATION**

THE ALMACO WAY

GLOBAL LEADERSHIP WITH SMALL TOWN VALUES



HUMBLE BEGINNINGS TO INDUSTRY LEADER

Founded in 1884 as Allan's Blacksmith and Welding, ALMACO is the oldest business in Story County. With core values of integrity, diligence, and reputation, ALMACO has transformed from a small local blacksmith in Iowa to the global leader in seed research equipment. With innovative solutions, ALMACO helps clients develop better seed, provide food, fuel, and fiber to the world.

MISSION

Form an alliance with clients to help them pursue their research and development goals.

VISION

ALMACO will create, market, and support innovative, high quality, value added, information rich solutions for use in the agricultural research industry that exceed our clients' expectations.



THE ALMACO DIFFERENCE

TOTAL SOLUTIONS WITH LEADING RESULTS

One-stop solutions provider for every stage in the seed research process



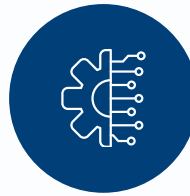


TOTAL SOLUTIONS OFFERING



PROCESSING SYSTEMS

Customizable range of processing equipment to clean, sort, and treat seed.



ENGINEERING SERVICES

Customize or build new solutions to exact specification.



PLANTING SYSTEMS

Plot planting solutions for prime seed placement and uniform plot dimensions.



MANUFACTURING SERVICES

Quality manufacturing for products and custom projects.



FIELD SYSTEMS

Versatile solution for field treatment, custom spraying, phenotyping, and more.



FINANCIAL SERVICES

Easy financing for new product purchases or leased products.



HARVEST SYSTEMS

Leader in plot harvesting with scalable solutions for all operational sizes.



AFTERMARKET SERVICES

Industry's best service network and best-in-class warranty.



PROCESSING
SYSTEMS & LABS



INTEGRATED SEED PROCESSING SYSTEM

CUSTOMIZABLE RANGE OF EQUIPMENT

READY FOR EVERY STOP OF SEED PROCESSING

ALMACO helps you save time and resources by automating your seed lab processes. The ALMACO Seed Processing Line combines the functionality of each processing step (Shelling/Threshing, Cleaning, Grading, Color Sorting, Treating and Packaging) by pneumatically transferring seed from process to process. The process starts out with unprocessed crop and delivers 100% cleaned, sorted, treated seed at the end. A complete Seed Processing Line from ALMACO will safely minimize handling, seed spillage, sample contamination and speed up your results.

CUSTOMIZE AND SCALE FOR YOUR NEEDS

A Seed Processing Line from ALMACO could include all or just a few options to meet your unique needs. Pieces are sold individually or as a set of your choosing.





DOWN-DRAFT TABLE

REDUCES BATCH TO BATCH CARRYOVER

EFFICIENTLY REMOVES HARMFUL DUST

ALMACO's down-draft table efficiently removes harmful dust commonly created while unpackaging seed samples collected from the field. Multiple mesh screen sizes are available and reduce carry-over compared to traditional non-aspirated sorting tables.

FEATURES

Working Surface	3' x 4'
Aspiration Port	6" - 8"
Adjustable Height	32" - 36"
Easy Remove Discard Grain Trap	





INFEED CONVEYOR

ENCLOSED SYSTEM FOR INCREASED OPERATOR SAFETY

OPTIMIZES SEED PROCESSING WITH DUST MANAGEMENT

The ALMACO Infeed Conveyor is an enclosed conveyor system, designed to safely manage dust and seed processing waste. The conveyor delivers material autonomously for a faster seed processing time.

FEATURES

Provides Dust and Waste Management

Autonomous Conveyor for Faster Processing Time

Promotes a Safe Work Environment





THRESHERS AND SHELLERS

EASY INTEGRATION INTO SEED PROCESSING SYSTEMS

EASY TO OPERATE AND SELF-CLEANING

ALMACO threshers and shellers play a key role in seed processing and have multiple variations. The seed is threshed gently for the best quality harvest data and cleanly in preparation of seed for planting.





COB CONVEYOR

TRANSFERS COBS FROM CORN SHELLER

USER FRIENDLY AND EFFICIENT

Increases efficiency and ease-of-use when transferring corn cobs from the ALMACO Maizer corn sheller to a bulk storage hopper. The self-contained, motorized driver roller transfers corn cobs to a bulk storage hopper. A cyclone can be added on the discard end to merge discard from the processing line.

FEATURES

Cob Conveyor to Fit Maizer Sheller

On/Off Switch with E-Stop

Self-Contained Motorized Drive Roller





SIGHT GLASS

EASY VISIBILITY TO SHELLED SAMPLES

INSTALLED UNDER THE SHELLER CYCLONE

The ALMACO Sight Glass is a simple addition to the sheller cyclone in a seed processing line. The 4-inch glass tube installs simply and allows the operator to easily confirm if a sample has been shelled.

FEATURES

4" Glass Tube

Easy Visibility to Shelled Samples

Sold in New Seed Processing Lines or as Aftermarket Kits





ASPIRATOR

GENTLY CLEANS LIGHT MATERIAL FROM SEED

PERFECT ADDITION TO SEEDBOSS SEED SIZER

Prior to transferring seed to the Seedboss, the connected ALMACO Aspirator separates bee wings and light material from the sample. Light cob tips and light grain are also captured in the discard tube.

FEATURES

Easy Addition to Seedboss Seed Grader

Separates Light Material from Sample

Captures Cob Tips and Light Grain in Discard Chute





SEEDBOSS ORBITAL SEED SIZER

QUIET OPERATION WHILE ELIMINATING HANG-UPS

FAST AND GENTLE PROCESSING POWER

Seedboss is the industry leader in seed sizing. The machine gently moves the seed in an orbital motion across two sets of screens, separating targeted seed from the remaining material. The wide bed increases seed flow to process seed faster and a variety of sift and scalp screens are available for multiple crop combinations.

Counterweighted for reduced vibrations, Seedboss is quieter than driving inside most cars. Low operating sound levels means greater safety for our clients and a more enjoyable experience to operate. Optional casters are also available for an operator to conveniently move Seedboss with the flow of operations.

SPECIFICATIONS

SEEDBOSS ORBITAL SEED SIZER OVERVIEW

DIMENSIONS

Width	27"
Length	70"
Height	40.5"
Weight	340 lbs

OPERATIONAL SOUND LEVELS

Sound Levels	84 Decibels
--------------	-------------

PROCESSING CAPACITY

Clean Grain Per Hour	185 - 200 lbs
----------------------	---------------

POWER TYPE

1/4 HP 110V Electric Motor	60 Hz
1/3 HP 220V Electric Motor	50Hz
1/4 HP 220 V Electric Motor	60 Hz

DISCARD HANDLING CHOICE

Sift	Front or Side
Scalp	Funnel for Conveyor/Bucket or Venturi Funnel

SCREEN SIZES

Sift	10/64, 11/64, 12/64, 14/64, 15/64, 16/64, 17/64, 18/64, 19/64, 8/64, 9/64
Scalp	17/64, 18/64, 20/64, 21/64, 22/64, 23/64, 24/64, 25/64, 26/64, 27/64, 28/64

FEATURES

Quieter Than Driving Inside Most Cars
Wide Bed Processes Seed at 185 - 200 lbs/hr
Counterweighted to Reduce Vibrations
Discard Steams are Merged Into One
Multiple Sift and Scalp Screens for Most Crops



COLOR SORTER AND SEED COUNTER

PREMIUM AND USER-FRIENDLY

PROCESSING DESIGNED FOR SEED RESEARCH

The VMEK Color Sorter and Seed Counter delivers custom features designed for seed research operations. The specialty machine is the most user-friendly and most precise system with the lowest possible batch-to-batch carryover.

The machine is ready for both batch operations and continuous processing systems. The compact footprint has a low integration cost and includes flexible stand configurations. Outputs of special color, size, and count data are stored for up to one million parts with high accuracy.



SPECIFICATIONS

COLOR SORTER AND SEED COUNTER OVERVIEW

DIMENSIONS

Width	18.63"
Length	35.98"
Height	41.70"
Weight	350 lbs

AIR REQUIREMENTS

1 - 10 CFM	80 PSI
------------	--------

OPERATING TEMPERATURE

Maximum Temperature	113 F / 45 C
---------------------	--------------

DISPLAY

Color Screen	15"
--------------	-----

DATA STORAGE

Data Volume	Up to 1 Million Parts
-------------	-----------------------

POWER REQUIREMENTS

Power	50 - 60 Hz
Vacuum	115/230 VAC

FEATURES

Compact Footprint with Low Integration Cost
Intuitive User Interface
Dependable and Precise Ejection
Sorts Accurately by Color and Shape
Counts at High Rate with Precision
Flexible Stand Configurations
Batch Operation or Continuous Processing



R-SERIES SEED TREATERS

REDUCES BATCH TO BATCH CARRYOVER

INTEGRATED AND AUTOMATED SOLUTIONS

The ALMACO R-6, R-12, and R-25 Seed treaters are fully automated with an integrated treatment pump, timed drying, and air-actuated discharge. Remove the guesswork from treated seed with uniform and reliable treatment. Three unique sizes treat seed at the scale required for each unique operation in batch quantities as little as 50 kernels to over 50 pounds of seed.

FEATURES

Manuel Load Hopper

Clean Air Aspiration

Clear Treatment-Viewing Port

Timer and Treatment Pump

Durable Seed Discharge Spout

Standard Envelope Holder

SPECIFICATIONS

R-SERIES SEED TREATERS



R-6 SEED TREATMENT

Height	21"
Width	30"
Length	20"
Weight	25 - 75 lbs
Electrical	110V
Circuit	20 AMP
Volume	50-1500 Kernels
Air	50 psi
Chamber	6" Rotary
Tube	Stainless Steel

R-12 SEED TREATMENT

Height	30"
Width	36"
Length	45"
Weight	250 lbs
Electrical	110 - 220 V
Circuit	20 AMP
Volume	50-1500 Kernels
Air	50 psi
Chamber	12" Rotary
Tube	Stainless Steel

R-25 SEED TREATMENT

Height	48"
Width	48"
Length	44"
Weight	900 lbs
Electrical	220 V
Circuit	20 - 30 AMP
Volume	10 - 50 lbs
Air	35 - 60 PSI
Chamber	25" Rotary
Tube	Stainless Steel



Cyclone



Seed Venturi



Transfer Blower

SEED TRANSFER SYSTEM

DELIVERS SEED TO NEXT PHASE OF PROCESSING

TOTAL CLEANOUT FROM SAMPLE TO SAMPLE

The ALMACO Seed Transfer System includes a cyclone, cyclone stand, seed venture, seed transfer blower, air diverter valve, and a series of hoses and clamps. The polyurethane seed transfer hoses are gentle on seed and air is diverted from the cyclone to expedite total cleanout. The cyclone and Venturi funnel can be clocked either direction and will not bridge with the grain.

SPECIFICATIONS

Electric - Phase 1	240 V - 11.5 AMP
Electric - Phase 2	280 V - 6.9 AMP
Electric - Phase 3	480 V - 3.1 AMP

FEATURES

100% Cleanout from Sample to Sample
Multi-Directional and Easy Installation
Gentle to Protect Seed in Transfer



ALMACO

Metrix



SEEDROSS





WASTE GRINDING SYSTEM

DECREASES WASTE DISPOSAL COST

GRINDS WASTE FOR EASIER HANDLING

The ALMACO Waste Grinding System grinds waste for easier handling. Material is transported using a cyclone dust collection unit and guards make the machine safe for operators. With ground material, the Waste Grinding System decreases regulated waste disposal costs for greater return on investment.

FEATURES

Grinds Waste for Easier Handling

Decreases Regulated Waste Disposal Cost

Cyclone Dust Collection Unit Transports Material





AIR BLAST SEED CLEANER

FINAL CLEANING OF SAMPLES

CUSTOM CONFIGURATIONS WITH IMPROVED PERFORMANCE

The ALMACO Air Blast Seed Cleaner (ABSC) is designed for final cleaning of up to five-pound samples of grain. The exclusive air-column cleaning system improves sample purity with leading performance. The ABSC can be customized with multiple interchangeable screens and catch pans while the dual cage blower wheels provide increased capacity.

SPECIFICATIONS

Power	1/8 HP 115 - 220V
Screens	1/8, 1/2, 1/4, 3/8
Capacity	2 - 5 lbs

FEATURES

Pure Samples with Air-Column Cleaning
Dual Blower Wheels to High Capacity
Interchangeable Screens and Catch Pans



PORTABLE SEED LAB

PORTABLE STAND FOR TESTING THRESHED SEED

QUICK AND ACCURATE WEIGHT AND MOISTURE READINGS

The ALMACO Portable Seed Lab is an economic alternative to a small plot combine. The unit pairs well with threshing including the LPR, LPT, or Maizer for quick and accurate weight and moisture readings using the D1 Data Collection Unit operating software.

SPECIFICATIONS

Power System	12V
Software	Standard or D1
Data Management	DAP Handheld
Hardcopy Backup	Star Printer

FEATURES

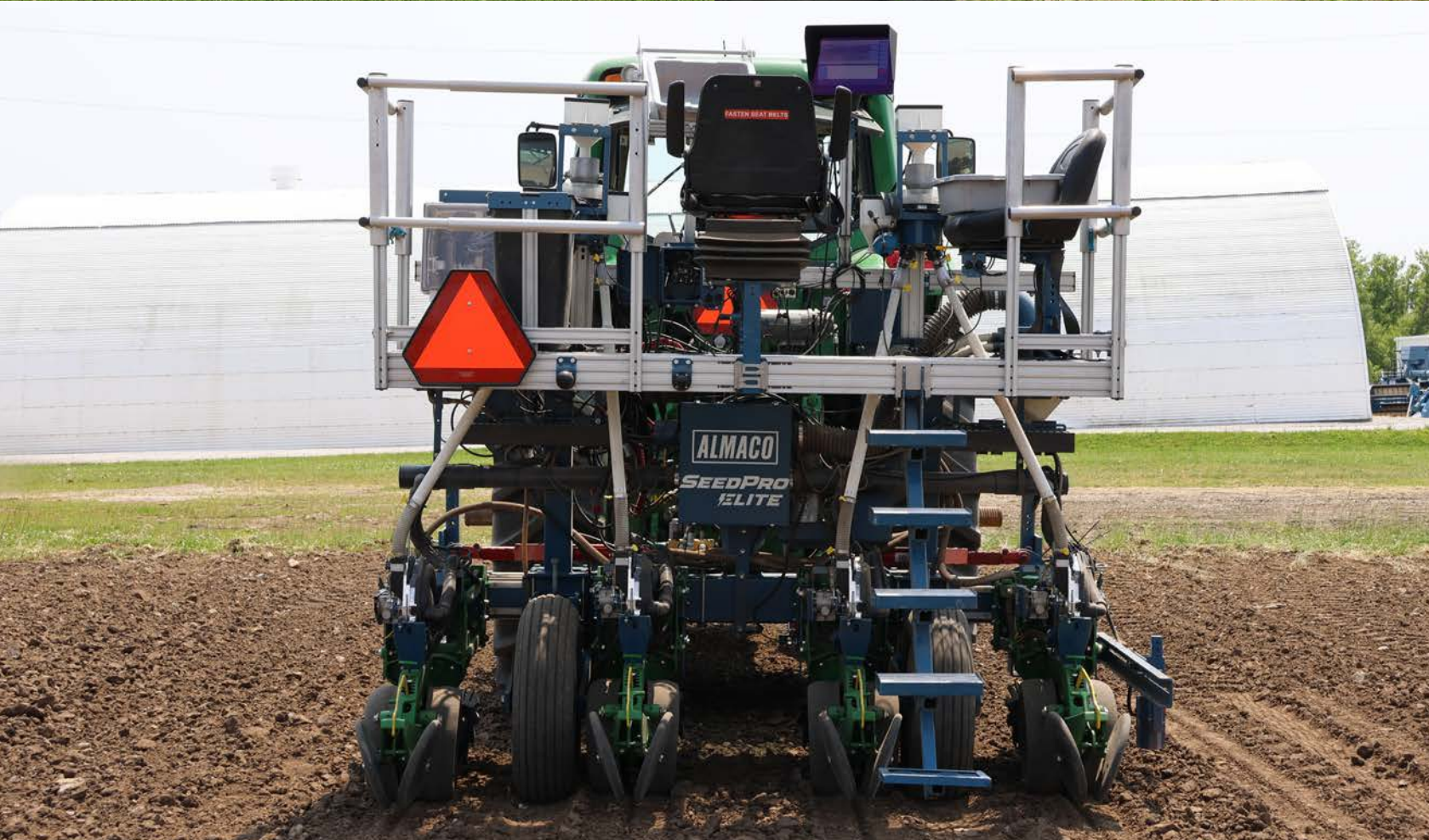
Heavy-Duty Portable Stand
Economically Pairs with ALMACO Threshers
Multiple Options for Testing and Collection
Printer, Handheld, and Software Options



ALMACO

ALMACO Seed Spector LFX

*PLANTING
SOLUTIONS*



ROW CROP PLANTING





SEEDPRO ELITE RESEARCH PLANTER

DISCOVER ULTIMATE PRECISION YOUR WAY

TECHNOLOGY WITH INDUSTRY-LEADING RESULTS

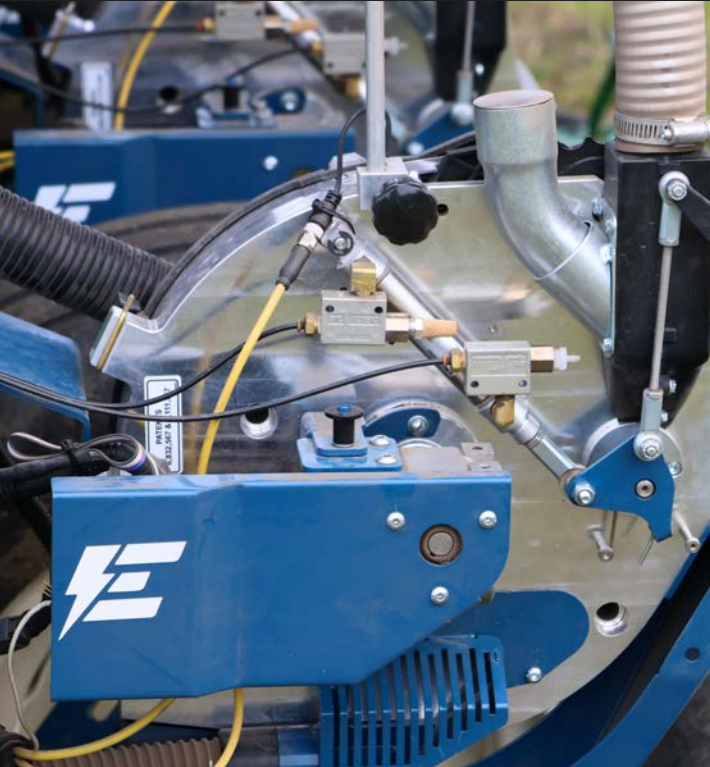
The patent-pending ALMACO SeedPro Elite Research Planter delivers the most precise seed placement and the best targeted plot dimensions compared to any other plot planter in the industry.

Aligned alleys and uniform plot dimensions are not just aesthetically pleasing, but also drive better data. Border plants in each plot have equal sunlight exposure and soil nutrient opportunity and carryover is reduced because it is easier to harvest each plot without taking plants from another.

Combined with electrical individual row controls and flexible mapping, SeedPro Elite provides unrivaled control of your seed research data and unmatched data quality.

SEEDPRO ELITE PRECISION PLANTER

EXPERIENCE THE NEXT LEVEL OF PLANTING PRECISION



INDUSTRY-LEADING ACCURACY

Electric-drive motors and individual row controls deliver the most precise seed placement through row-by-row population planting for ultimate control over research plot data. Synchronization between rows and automated timing generates immaculate plot starts every time for consistent seeds in each row.

FLEXIBILITY WITH CONTROL

Manage your research your way with flexible mapping including variable rate by row, variable length by row, and variable length within the same pass, all without stopping to reset plot lengths. Speed-compensated planting controls maintain an even seed placement for consistent data, no matter the environment.





INTUITIVE DESIGN

Experience a new intuitive user interface for easy operations and simple planter controls that can be set up in just minutes to get to the field faster.

00:00

DIVERSE COMPATIBILITY

Easy integration with your tractors and any guidance system adds additional operational flexibility. Upgrade packages are available for current planters and seamless compatibility with the ALMACO automated planting system, PowerPlant.



SPECIFICATIONS

SEEDPRO ELITE PRECISION PLANTER OVERVIEW

ACCURACY

Seeding Rate	+/-1 Seed
Carryover	0%

COMPATIBLE CROPS

Crop Types	Corn Soybeans Sorghum Sunflowers Cotton
------------	---

SEED PLATE SPEED

Seed Plate Speed Range	5-20 rpm
------------------------	----------

TRANSMISSION

Transmission Requirements	No
---------------------------	----

MAX SYSTEM NUMBER OF RADIOS: 30

Motor - 1 Per Row
IO Controller - 1 Per Planter

OPERATIONAL SCOPE

Number of Rows	1-8
Row Spacing	15-40"
Alley Length	24-60"
Plot Length	1-10,000'
Max Field Size	8190 Single Trip Plots

HYDRAULIC REQUIREMENTS

Vac	15 gpm
Steering Reserve	1-5 gpm
Meters	0 gpm
PowerPlant	2-3 gpm
Without PowerPlant	16-20 gpm
With PowerPlant	18-23 gpm

ELECTRICAL POWER REQUIREMENTS

Motor Draw Per Row	1.25-4.5 A
--------------------	------------

POPULATION RANGE IN SOYBEAN

Without Switching Plates
Or Changing Ground Speed

49-190K

Yes

POPULATION RANGE IN CORN

Without Switching Plates
Or Changing Ground Speed

12-47K

Yes

GPS REQUIREMENTS

5 Hz	Minimum
10 Hz	Compatible
20 Hz	Compatible





SEEDPRO 360 RESEARCH PLANTER

DISCOVER ULTIMATE PRECISION YOUR WAY

TECHNOLOGY WITH INDUSTRY-LEADING RESULTS

The efficient design of the SeedPro 360 Research Planter meets the need for a simplified, high-precision seed meter. A large diameter pick-up plate allows for consistent seed pick up, even at lower plate RPMs. With high accuracy and a triple-roller design for accurate singulation, SeedPro 360 has with low seed-size sensitivity for seed placed with precision every time.

SeedPro 360 is available for retrofits for most other ALMACO planters, competitive seed research planters, and most commercial planters. Retrofits are a simple and affordable option for seed research professionals around the world.

SPECIFICATIONS

SEEDPRO 360 RESEARCH PLANTER

TOOLBAR

Square Tube	7"x 7"
Adjustable Row Spacing	12" - 40"
Height Options	Multiple
Adjustable Gauge Wheels	Multiple

PLANTER UNITS

Depth Control	0" - 3"
Tillage System	Yes
Closing Wheel Options	Multiple

FEATURES AND COMPONENTS

Row Options	2 - 24 Rows
Tires	Multiple
Personnel Carriers	Yes
Adjustable packet holders	Yes
Vacuum Systems	Hydraulic
Voltage Meter Provided	Yes
Hubble Snap Connectors	Yes

Contact us at almaco.com for more information or a quote today!





POWERPLANT AUTOMATED SYSTEM

RIDERLESS PLOT PLANTING TECHNOLOGY

SEED PLACEMENT PRECISION MEETS LEADING OPERATOR SAFETY

Exclusively from ALMACO, the PowerPlant Automated Planting System is the fastest, most efficient plot planting system available today. Performance accuracy of PowerPlant far exceeds reliability standards of traditional plot planting and the best part, no operator is required to ride on the planter. All plot preparation is done prior to going to the field and one tractor driver can plant around 5,760 plots while stopping only 2 times to reload the cartridge dispenser.

With only one tractor operator needed to plant so many plots, PowerPlant alleviates labor challenges, decreases operational costs, and increases operator safety for greater peace of mind. It's the future of seed research, and it's ready to work for you.

SPECIFICATIONS

POWERPLANT AUTOMATED PLANTING SYSTEM

SEED CARTRIDGES

Dimensions	2.5"x 4"x 0.875"
Capacity	2.77"³

CARTRIDGE MAGAZINES

Dimensions	4.5"x 22.5"x 26"
Empty Weight	12 lbs
Capacity	240 Cartridges

FEATURES AND COMPONENTS

Planting System with Cartridge Magazines
Cartridge Barcode Printer
Cartridge Packager
Cartridge Sorter
Magazine Placement Verifier
Transfer Tool to Move Cartridges to Magazine
Storage and Transportation Carts

Contact us at almaco.com for more information or a quote today!





CONE PLOT PLANTER

PROVEN VERSATILITY WITH CUSTOMIZABLE DESIGNS

MULTI-CROP FUNCTIONALITY WITHOUT SACRIFICING ACCURACY

Cone Plot Planters are one of the most versatile plot planting designs. With three cone type seeder designs, there is a variation to meet each unique need in the seed research industry. The cone planter can easily be customized for full control of plot planting operations.

Engineered, designed, and tested for crop compatibility, cone plot planters from ALMACO can plant most row crops without sacrificing accuracy. Adjustable gauge wheels provide uniform planting quickly and efficiently.

SPECIFICATIONS

CONE PLOT PLANTER

CONE TYPE UNITS

Standard, Belt Cone, or Precision Cone

ROW UNIT OPTIONS

John Deere, Kinze, or Case IH

TRIPPING SYSTEM

Manual or Electronic

TOOLBAR

Single or Double Telescoping 7" x 7"

TRANSMISSION

Flat plate with over 50 combinations

FEATURES AND COMPONENTS

Two Adjustable Gauge Wheels

Interchangeable Bulk Hoppers

Hydraulic Row Markers

Tru-Vee Depth Control and Closing Wheels

Electric Seed Cup Lift

Mounted Divider Funnels

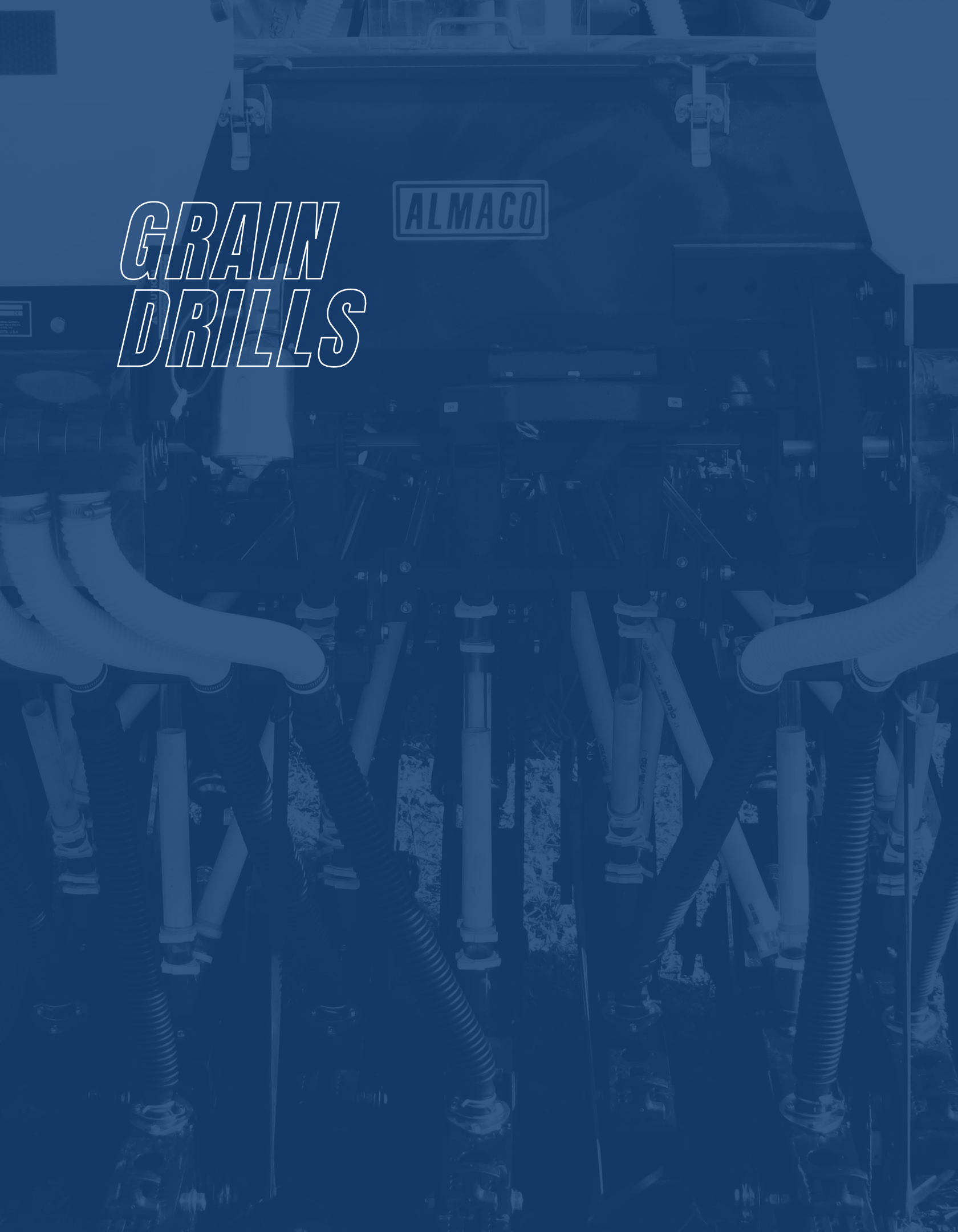
Hubble Snap Connectors

Contact us at almaco.com for more information or a quote today!



GRAIN DRILLS

ALMACO







HEAVY-DUTY GRAIN DRILLS

DURABLE BUILD FOR DEPENDABLE PERFORMANCE

PERFECT FOR MINIMUM AND NO-TILL APPLICATIONS

The ALMACO Heavy-Duty Grain Drill (HDGD) uses a reinforced frame for ultimate durability and performance in the toughest no-till conditions. For applications using tillage, the toolbar is ready for special attachments and an included toolbar weight.

The seed is metered with cone planting units and distributed by a spin divider for proven planting dependability and multi-crop compatibility. Strong and reliable openers and closing wheels come standard. Adjustable row spacing supports the unique needs of each seed research application.

SPECIFICATIONS

HEAVY-DUTY GRAIN DRILL

SEED METER

Cone-Type with Spin Divider

TIRES

Lugged or Smooth Options

HITCH

Category 1, Category 2, or 3-Point Hitch

TOOLBAR

Heavy-Duty 7"x 7"

Tillage Weight Optional

TRANSMISSION

Sprocket Transmission

FEATURES AND COMPONENTS

Adjustable Down Pressure

Adjustable Row Spacing

Strong Openers and Closing Wheels

Side Plates for Bulk Hopper and Fertilizer

Ergonomic Seat and Seed Packet Holder

Jack Stands

Contact us at almaco.com for more information or a quote today!





LIGHT-DUTY GRAIN DRILLS

CUSTOM DESIGNED FOR EFFICIENT OPERATION

PERFECT FOR CONVENTIONAL OR REDUCED TILLAGE APPLICATIONS

The ALMACO Light-Duty Grain Drill (LDGD) is designed for conventional tillage or no tillage applications. While this implement is for light-duty operations, the channel iron framework is made to last, formed with 10-gauge steel.

The seed is metered with cone planting units and distributed by a spin divider for proven planting dependability and multi-crop compatibility. John Deere openers with depth control and strong closing wheels come standard and adjustable row spacing supports the unique needs of each seed research application.

SPECIFICATIONS

LIGHT-DUTY GRAIN DRILL

SEED METER

Cone-Type with Spin Divider

TIRES

Lugged or Smooth Options

HITCH

Category 1, Category 2, or 3-Point Hitch

TOOLBAR

Light-Duty	2" x 3"
------------	---------

Tillage Weight	Optional
----------------	----------

TRANSMISSION

Sprocket Transmission

FEATURES AND COMPONENTS

Adjustable Down Pressure

Adjustable Row Spacing

Strong Openers and Closing Wheels

Side Plates for Bulk Hopper and Fertilizer

Ergonomic Seat and Seed Packet Holder

Jack Stands

Contact us at almaco.com for more information or a quote today!





***HAND OPERATED
PLANTERS***





HAND JAB STANDARD-STYLE PLANTER

LIGHT WEIGHT FOR OPERATOR COMFORT

IDEAL FOR PLANTING IN WELL-WORKED SOIL

Constructed with a wooden back, the ALMACO Hand Jab Standard-Style Planter is light weight for operator comfort. The planter is ideal for well-worked or sandy conditions. The wider barrel and planter bit are simple to use while maintaining a high attention to accuracy.

ADDITIONAL OPTIONS

Custom Sprocket Combinations

Seed Packet Holder

Row Markers





HAND JAB SLIM-STYLE PLANTER

NARROW BUILD AND DURABLE

IDEAL FOR PLANTING IN TOUGHER SOIL

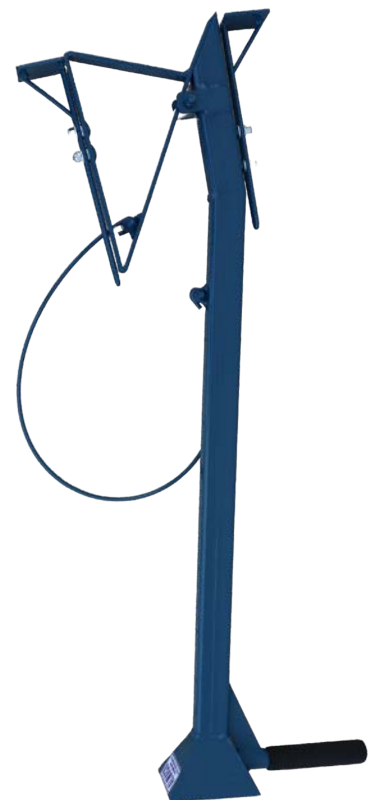
With a frame constructed entirely of metal, the ALMACO Hand Jab Slim-Style Planter is thin and durable for heavy use. The planter is ideal for tougher soil conditions or if additional seed depth is required. The slim barrel and planter bit are accurate and simple to use.

ADDITIONAL OPTIONS

Custom Sprocket Combinations

Seed Packet Holder

Row Markers





PUSH CONE PLOT PLANTER

LARGE PLANTER POWER IN A SMALL PACKAGE

IDEAL FOR PLANTING PRECISION

The ALMACO Push Cone Plot Planter simulates the planting technique of larger ALMACO planters by using the same precision metering cone. The cone makes one complete turn per plot length and multiple seed cup sizes are available.

ADDITIONAL OPTIONS

Custom Sprocket Combinations

Seed Packet Holder

Row Markers





V-BELT PUSH PLANTER

LARGE PLANTER POWER IN A SMALL PACKAGE

IDEAL FOR PLANTING MULTI-CROP OR SMALL SEEDS

The ALMACO V-Belt Push Planter is recommended for planting very small seeds, multi-crop varieties, or for applying granular chemicals. Simply choose from either a ribbed or smooth belt to fit your particular application.

ADDITIONAL OPTIONS

Custom Sprocket Combinations

Seed Packet Holder

Row Markers





***PLOT PLANTING
ELECTRONICS***



MOBILE DEMAND

DURABLE FIELD-TESTED TABLET

TOUCH SCREEN DISPLAY MADE TO LAST

The 7" Mobile Demand Touchscreen is ALMACO's latest fully-rugged tablet platform for the SkyTrip GPS system. Mobile Demand provides a user-friendly interface, is sunlight viewable, and is military hardened for problem-free use. Experience the functionality of a tablet and the full Windows operating system of a computer.

FEATURES AND COMPONENTS

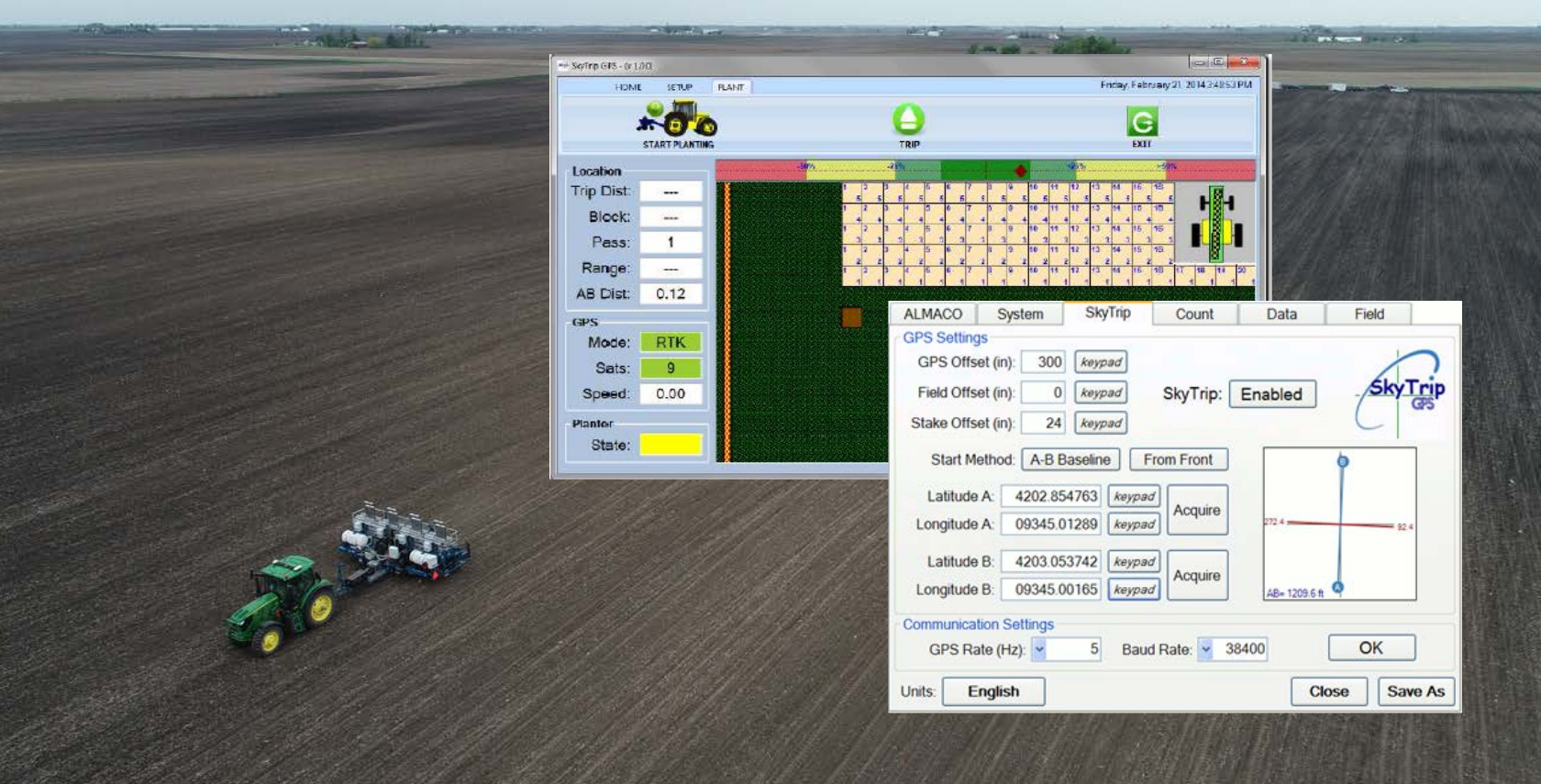
7" High Resolution Touchscreen

Sunlight Readable

Drop, Shock, Water, and Dust Resistant

Compatible with HarvestHD Software





SKYTRIP GPS SYSTEM

DEPENDABLE SOFTWARE FOR PLANTING ACCURACY

INCREASE PLOT PLANTING EFFICIENCY BY UP TO 40%

The patented SkyTrip GPS Plot Tripping System is an economic upgrade to increase plot planting efficiency. Accomplish more in each day by significantly reducing the amount of time required for field setup and plot marking. SkyTrip can increase operational efficiency by up to 40%.

SkyTrip also eliminates the need for a check cable system for added operator safety. No moving parts and less operator fatigue means less risk of field accidents or injuries. With ultimate peace of mind, field staff can focus on planting plots and tasks at hand.

SPECIFICATIONS

SKYTRIP GPS SYSTEM

PRODUCT COMPATIBILITY

ALMACO Planters and Grain Drills

CHECK CABLE SYSTEM

None Needed

AUTOSTEER SYSTEM COMPATIBILITY

Yes

TILLAGE OPERATION OPTIONS

Functions in Both Till and No-Till Operations

OPERATING SYSTEM

Mobile Demand

FEATURES AND COMPONENTS

40% Efficiency Increase

Flexibility in Plot Lengths

Intuitive User Interface

Contact us at almaco.com for more information or a quote today!





FIELD MAP SYSTEM

MAPPING PRECISION WHEREVER YOU ARE

MAP FIELDS FROM YOUR OFFICE OR THE COMFORT OF YOUR HOME

ALMACO Field Map Software allows you to map out each field location prior to the planting season, all in the comfort of your own office. The simple user interface is intuitive and set up is flexible. Even after initial mapping, population rates and plot lengths can be changed on the fly from anywhere without stopping the planter.

Field Map is available exclusively for ALMACO SeedPro 360 Precision Plot Planters and is compatible plot planting tools including GPS, cables, and ground drives. With no annual fee and minimal set up required, Field Maps is the economical and flexible technology needed in the seed research industry.

SPECIFICATIONS

FIELD MAP SOFTWARE

PLANTER COMPATIBILITY

SeedPro 360 Research Planter

PLANTING TECHNOLOGY COMPATIBILITY

GPS, Cables, and Ground Drives

OPERATING SYSTEM CRITERIA

Windows Compatible Systems

FEATURES AND COMPONENTS

Change Population Rates on the Go

Change Plot Lengths on the Go

No Annual Fee

Contact us at almaco.com for more information or a quote today!





PLOT PRESCRIPTION SYSTEM

MODERN TECHNOLOGY FOR PLOT PLANTING DATA

IDENTIFY AND APPLY PRESCRIPTIONS TO FIELD PLOTS

Make a big impact to your operations using plot prescription software. 3D field layers including soil type, fertilizer, and topography help to pinpoint the most effective areas of your field for seed research. You can also download and utilize USDA soil maps, moisture maps, and other general data maps.

The plot prescription software takes into account obstacles including irrigation pivots, buildings, creeks, waterways, and more. Maps can be developed from the comfort of your office and once built, can be prescribed to the optimal location in the field.

SPECIFICATIONS

PLOT PRESCRIPTION SYSTEM

PLANTER COMPATIBILITY

SeedPro 360 Research Planter

OPERATING SYSTEM CRITERIA

64 Bit System

1 GHz Processor or Higher

Windows 8, 10, or 11

256 MB RAM

4 GB Application/Data Storage Space

FEATURES AND COMPONENTS

Yield Maps and Application Records

Download Soil Data for Analytics

3D Terrain Map for Elevation Characteristics

Assign and Manage Prescriptions

Export Field Data with Guidance Lines

Averaging, Comparison, and Dataset Playback

Sort Data or Query to Analyze Regions

Precision Ag System Processing Is Compatible

Contact us at almaco.com for more information or a quote today!





***PLOT PLANTING
ACCESSORIES***

TOOLBARS



FLEXIBLE ROW SPACING

No-tool adjustments for row spacing of 12" - 40"



DRAWN

Drawn connectors with flexible added applications



MOUNTED

3-Point mounting for tight turns and less compaction



DOUBLE TELESCOPING

Multiple row spacing with hydraulic 2" increments



SINGLE TELESCOPING

Expands to 96" width and best for transport needs

PLOT MARKER SYSTEMS



CABLE WINDER

Plot tripping system with traditional cable winder



CHALK BOX MARKER

Chalk-based spray plot marker solution



SPRAY MARKER

Outdoor-grade field paint plot marker solution



STAKE DRIVING MARKER

Automatically places wood plot marking stakes

OPERATOR EXPERIENCE UPGRADES



SEED PACKET HOLDER

Adjustable and ergonomic seed packet holder



STATIONARY SEAT

Comfortable and simple operator seat



SUSPENSION SEAT

Smooth suspension seating for smooth riding



PERSONNEL CARRIER

Simple and economical operator seating



SEEDBOX STORAGE

Simple and convenient onboard seedbox storage



CANOPY SYSTEM

Protect operators from harsh sun or other hazards

TREATMENT AND FERTILIZER SOLUTIONS



DRY FERTILIZER

Easy dry fertilizer system to add on planter



LIQUID FERTILIZER

Simple liquid fertilizer system to add to planter



LIQUID INJECTION

Multi-tank treatment for injection in single pass

DISPOSAL SOLUTIONS



PACKET DISPOSAL

Container for disposing of used seed packets

CONE PLANTER METER SYSTEMS



31 CELL CONE

Multi-crop planting cone for sorghum up to corn



BELT CONE (BCTS)

Plants sorghum up to corn and granular chemicals



PRECISION CONE (PCTS)

Plants plots up to 25' with direct drop alignment

SEED SPLITTERS



PRECISION SPLITTER

Seed splitter for precision plot planting

NURSERY SYSTEMS



SEED INDEXING SYSTEM

Automates the seed
dumping process

PTO SYSTEMS



ALTERNATOR HYDRAULIC

Hydraulic alternator
enabling a PTO system



ALTERNATOR REMOTE

Remote alternator enabling
a PTO system



*FIELD
SYSTEMS*



SCOUT HIGH-CLEARANCE TRACTOR

VERSATILITY MADE FOR SEED RESEARCH APPLICATIONS

BRING VERSATILITY TO CROP CARE AND DATA COLLECTION

Introducing the first high-clearance tractor designed specifically with seed research and seed production in mind. Narrow wheel tracks and a high crop clearance move through developing fields with ease. Transport is accomplished without removing toolbars, using an exclusive easy-fold system. One operator can transition to transport mode in just seconds.

Operators experience a best-in-class premium cab with an integrated control system to maximize productivity. By minimizing displays needed for operation, users have better visibility for a safer operating environment.

Scout is one of the most versatile equipment resources available in the industry. The multi-use, custom toolbar can be used for spraying, detasseling, phenotyping, pollination technology, and more. If you can think of a need, Scout can get the job done.

SPECIFICATIONS

SCOUT HIGH-CLEARANCE TRACTOR

DIMENSIONS

Weight	16,060 lbs
Height	145.5"
Length	276"
Width (without toolbar)	139"
Turning Radius	18'
Frame Clearance	76"
Wheel Track	121.5" - 145.5"

ENGINE

Cummins QSF 3.8L Stage V Diesel Engine

SUSPENSION

Independent Air Ride

TRANSMISSION

Transmission Requirements No

FUEL CAPACITIES

Diesel Tank	80 gal
DEF Tank	10 gal

TIRES

320/85/R28 Standard
380/80R38 Optional

ELECTRICAL

Battery	Dual 12V
Alternator	240 A
Starter	12V
Lights	LED

APPLICATION COMPATIBILITY

Row Guidance	Yes
Coverage Mapping with GPS	Yes

USER INTERFACE

Modern and Intuitive Display

CAB AND INSTRUMENTS

Cab Sound Level 72 dBA

Operator Seat Premium

Instructor Seat Yes

Radio Yes

HVAC Yes

FEATURES AND COMPONENTS

40% Less Displays Required Than Competitors

Narrow Wheel Track for Crop Protection

High-Clearance Height for Easy Navigation

Easy-fold Toolbar System for Transport

Best-in-Class Premium Cab

Multi-functional uses including detasseling, pollination technologies, spraying, phenotyping, and more

Contact us at almaco.com for more information or a quote today!



HARVEST SYSTEMS



RESEARCH PLOT HARVESTERS





R2 TWIN-PLOT ROTARY COMBINE

EARLIER HARVEST FOR FASTER ADVANCEMENT DECISIONS

CLEANEST SAMPLES WITH NO CARRYOVER PLOT TO PLOT

The R2 Twin-Plot Rotary Combine is a game changer in the seed research industry. The R2 operates at faster harvest speeds while producing less seed damage, cleaner samples, easier cleanout, and lower seed loss than competitive models. With two separate multispeed independent rotor chambers, there is no side-by-side crossover and plot to plot carryover is undetectable.

The self-cleaning, top-fed rotor design enables earlier harvest of large green plants, tough stems, and high plant foliage. With an increased harvest window, start harvesting plots earlier for faster advancement decisions.

The Final Tier 4 275 hp Cummins engine and 4-wheel drive advanced torque king keep operations running with maximum efficiency the R2 cab is designed for the unique needs of seed research professionals.

CHOOSE THE PLOT HARVEST LEADER

R2 TWIN-PLOT ROTARY COMBINE



PERFORMANCE YOU CAN TRUST

	Sample Cleanliness	Seed Damage	Harvest Time (20 Plots)	Bulk Harvest Speed - Soy	Bulk Harvest Speed - Corn	Carry-Over in 25 lb Sample	Plot Loss
R2 Combine	~ 99%	~ 1%	< 11 sec	~ 4 mph	~ 5 mph	~ 0.5 lbs	< 1%
Closest Competitor	~ 97%	~ 2.5%	< 22 sec	~ 2.5 mph	~ 3 mph	~ 0.6 lbs	~ 2%



PREMIUM COMFORT OPERATOR STATION

With ergonomic controls and the seed research industry's quietest cab, the R2 Premium Comfort Operator Station is designed with operator experience, comfort, and safety in mind. At a spacious 106 cubic feet, expanded curved glass and added LED lighting packages provides leading visibility.

STANDARD FEATURES

The world's most comfortable plot combine cab includes many standard features:

- 3-Zone Field Lighting with Integrated LEDs
- Automatic Dome Lighting
- Heated/Cooled Seat with Air-Ride Suspension
- Adjustable Seat-Mounted Console
- Flip-Up Secondary Seat
- Dual-Tilt and Telescoping Steering Column
- Automatic Climate Control
- Premium Radio
- Integrated Cup Holders
- Storage Bin



PLUS+1 MICRO-CONTROLLER

Micro-controller based operating system includes one-touch adjustments and integrated diagnostics for fast, simple operations.



R2 TWIN-PLOT ROTARY COMBINE

EXPERIENCE THE LEADER IN PLOT HARVESTING



HARVEST DATA YOU CAN TRUST

Exclusively from ALMACO, the patent-pending top-fed rotary design provides over a 99.9% cleanout. The R2 is also a true twin-plot combine, not a split. Seed chambers are completely independent with no risk or side-by-side contamination. Virtually no carryover from plot to plot means better data and more certainty in advancement decisions.

RUN STRONGER FOR LONGER

The R2 Twin-Plot Rotary Combine is the largest research combine in the industry and is designed for ultimate uptime. With the flip of a switch from the comfort of your cab, grain tank extenders are available to help you reach a 300-bushel maximum grain tank capacity for increased run time.





MULTI-CROP DEPENDABILITY

Ideal for corn, soybeans, wheat, cereal, sorghum, canola, and more, this is the industry's only true multi-crop platform. Changing harvest crop is made easy with an exclusive auto header recognition platform and can take a single person less than two minutes. Just simply swap out single sieves and adjust the concaves and it's on to the next crop.

MAINTENANCE MADE EASY

Extensive diagnostic systems include operating system alerts, diagnostic alerts, and other operational settings. With only four belts and zero chain drives to manage, maintenance is simple. Service points are easily accessible with an automated rear platform ladder and a large platform around the power unit. A reversible hydraulically driven fan can also be adjusted from the cab to clear debris.



SPECIFICATIONS

R2 TWIN-PLOT ROTARY COMBINE

BASE DIMENSIONS

Weight	30,000 lbs
Height	144"
Length	330"
Width	132"
Turning Radius	23'
Ground Clearance	18"
Wheel Track	105" - 127"

ENGINE

Cummins QSB 6.7L FT4 Diesel Engine

COOLING

Radiator with Charge Air Coolers

MULTI-PAD HYRDAULIC PUMP DRIVE

Hydraulic Reservoir 35 gal

FUEL CAPACITIES

Diesel Tank	160 gal
DEF Tank	15 gal

GROUND DRIVE

Wheel Motors - TorqueKing 4WD
580/70R38 Front Wheels
480/70R30 Rear Wheels

THRESHING AND SEPARATION

Rotor Diameter	15.5"
Rotor Length	99"
Torque Speed - High	900 - 1200 rpm
Torque Speed - Low	200 - 900 rpm

TRANSMISSION

3-Step Transmission	5 - 20 mph
---------------------	------------

CONCAVES

Interchangeable Sections	5
Standard Bar Spacing	5/16", 3/8", 1/2", 5/8", and Solid
Alternative Bar Spacing	Multiple
Concave Clearance	1/8" - 1 1/4"

CLEANING SYSTEM

Single Sieve Length	72"
Single Sieve Width	20.75"
Fixed Sieve Sizes	4-22 mm
Hydraulic Sieve Fans	400 - 1800 rpm
Cleaning Slope Fans	400 - 1700 rpm
Air Compressor	High Capacity

GRAIN TANK

Capacity	Up to 300 bu
----------	--------------

AUGER

Clearance Height	13.5' - 16'
Unload Time	2.5 bu/sec

CONTROL SYSTEMS

Electronic Communication	CAN Bus
Micro-Controllers	Independent
Sensor Capacity	56
Cameras	Up to 4

INFEED

Dual Feeder Drums and Fixed Throat

SEED DELIVERY

Air Lock System	2 - 6 Vane
Capacity	18 lb/sec per side
Tubing	4" Diameter

HEADERS WITH AUTO RECOGNITION

R2 TWIN-PLOT ROTARY COMBINE



CORN HEADER

Adjustment	Hydraulic
Connector	Single Point, Multi-port
Reversible	Yes
4/2 Row Spacing	30"
Stripper Plates	Hydraulic
Length	121"
Width	130"
Weight	3,010 lbs

FLOATING ROW CROP AUGER HEADER

Independent Row Float	Pneumatic
Connector	Single Point, Multi-port
Reversible	Yes
4/2 Row Spacing	30"
Auger Flighting	Dual
Length	109"
Width	130"
Weight	2,990 lbs



DRAPER HEADER

Adjustment	Hydraulic
Sickle Bar Range	4" Up/Down
Auto Header Height	Yes
Ground Pressure Control	Yes
Cut and Fore/Aft Tilt	Yes
Length	133"
Width	126"
Weight	3,440 lbs





R1 SINGLE-PLOT ROTARY COMBINE

HARVEST FASTER WITH CLEANER SAMPLES

ENHANCED DATA FOR EARLIER ADVANCEMENT DECISIONS

The R1 Single-Plot Rotary Combine operates at faster harvest speeds while producing less seed damage, cleaner samples, easier cleanout, and lower seed loss than competitive models.

The R1 can harvest up to 30% faster than alternative plot combines. The self-cleaning, top-fed rotor design enables earlier harvest of large green plants, tough stems, and high plant foliage. With an increased harvest window, start harvesting plots earlier for faster advancement decisions.

With its easy-to-change concaves and simple interchangeable head designs, the R1 is ideal for use in seed research programs with multiple crops.

CHOOSE THE PLOT HARVEST LEADER

R1 SINGLE-PLOT ROTARY COMBINE



PERFORMANCE YOU CAN TRUST

	Sample Cleanliness	Seed Damage	Harvest Time (20 Plots)	Bulk Harvest Speed - Soy	Maturity Capability	Ground Speed	Plot Loss
R1 Combine	99% - 100%	~ 1%	~ 10 sec	~ 4 mph	10	12 mph	< 1%
Closest Competitor	~ 97%	~ 2.5%	~ 12 sec	~ 2.5 mph	7	10 mph	< 2%



PREMIUM COMFORT OPERATOR STATION

With ergonomic controls and the seed research industry's quietest cab, the R1 Premium Comfort Operator Station is designed with operator experience, comfort, and safety in mind. At a spacious 106 cubic feet, expanded curved glass and added LED lighting packages provide leading visibility.

STANDARD FEATURES

The world's most comfortable plot combine cab includes many standard features:

- 3-Zone Field Lighting with Integrated LEDs
- Automatic Dome Lighting
- Heated/Cooled Seat with Air-Ride Suspension
- Adjustable Seat-Mounted Console
- Flip-Up Secondary Seat
- Dual-Tilt and Telescoping Steering Column
- Automatic Climate Control
- Premium Radio
- Integrated Cup Holders
- Storage Bin



PLUS+1 MICRO-CONTROLLER

Micro-controller based operating system includes one-touch adjustments and integrated diagnostics for fast, simple operations.



SPECIFICATIONS

R1 SINGLE-PLOT ROTARY COMBINE

BASE DIMENSIONS

Weight	~15,000 lbs
Transport Height	127"
Wheelbase	99"
Wheel Track	60" - 66"
Turning Radius	30.5'
Ground Clearance	11"
Break-Over Angle	20 Degrees

ENGINE

Cummins QSF 3.8L FT4 Diesel Engine

COOLING

Radiator with Charge Air Coolers

MULTI-PAD HYRDAULIC PUMP DRIVE

Hydraulic Reservoir 33 gal

FUEL CAPACITIES

Diesel Tank	66 gal
DEF Tank	5 gal

GROUND DRIVE

Wheel Motors - TorqueKing 4WD
14.9 - 24 (ag lug)
12.5 - 15 (ag lug)

THRESHING AND SEPARATION

Rotor Diameter	15.5"
Rotor Length	99"
Torque Speed - High	800 - 1200 rpm
Torque Speed - Low	200 - 800 rpm

HYDRAULIC DUMP BAG TANK

Optional 11 bu / 72" Discharge Height

CONCAVES

Interchangeable Sections	5
Standard Bar Spacing	5/16", 3/8", 1/2", 5/8", and Solid
Alternative Bar Spacing	Multiple
Concave Clearance	1/8" - 1 1/4"

CLEANING SYSTEM

Single Sieve Length	72"
Single Sieve Width	20.75"
Fixed Sieve Sizes	16 mm
Hydraulic Sieve Fans	450 - 1700 rpm
Cleaning Slope Fans	450 - 1500 rpm
Air Compressor	High Capacity

GRAIN TANK

Capacity	40 bu
----------	-------

AUGER

Clearance Height	10.5'
Unload Time	2.5 bu/sec

CONTROL SYSTEMS

Electronic Communication	CAN Bus
Micro-Controllers	Independent
Sensors	Multiple
Cameras	Up to 4

INFEED

Hydraulically Driven and Reversible

SEED DELIVERY

Air Lock System	Removable Wheel
Capacity	18 lb/sec
Tubing	6" Diameter

HEADERS WITH AUTO RECOGNITION

R1 SINGLE-PLOT ROTARY COMBINE



CORN HEADER

Header built especially for corn plots and available in two, three, and four row configurations.



FLOATING ROW CROP AUGER HEADER

Patented belt design is made for soybeans and other types of dry beans with flexible row spacing from 30" - 40".



DRAPER HEADER

Floating or rigid options with auto header height, ground pressure controls, and a sickle bar range or up/down 4".



FLOATING STANDARD AUGER HEADER

Prevents bridging and material hang-up while decreasing grain loss by up to 10% and is designed for soybeans and cereals.



FLOATING STANDARD HEADER

Designed for soybeans and cereal grains with a floating sickle that decreases grain loss by up to 10%.



SUNFLOWER HEADER

Large sunflower heads with tough stems are no longer a challenge with a custom header designed for plot harvesting.





SPC20 RESEARCH COMBINE

PROVEN AND RELIABLE PLOT HARVESTER

MULTI-CROP APPLICATION MEETING GLOBAL REQUIREMENTS

The SPC20 Research Combine has revolutionized the seed research industry by providing fast, efficient multi-crop plot harvesting. The SPC20 is a single plot harvester and includes multiple sample handling configurations to meet the broad needs of the seed research industry. The automation springboard provides the technology necessary for the global expansion and development of today's seed research industry.

The SPC20 is a true multi-crop combine and can harvest plots of corn, soy, wheat, rice, canola, barley, grass, hemp, and more. With a pneumatic seed delivery system, the SPC20 provides less seed damage, higher germination rates, lower maintenance, and faster sample delivery.

CHOOSE A RELIABLE SOLUTION

SPC20 RESEARCH COMBINE



OPTION A

Equipped with all SPC20 specifications with the added options of a 20 bu grain tank, hydraulic unloading auger, and air delivery/value system to route samples to either the bagging station or the grain tank for bulk harvesting.

OPTION B

Equipped with all SPC20 specifications with the added options of a cyclone mounted by the driver seat, electric opener on the cyclone with push switch, and piping from cyclone to a bagging station for 2-person operations.

OPTION C

Equipped with all SPC20 specifications with the added options of a 20 bu grain tank, weigh hopper with electrical dump/moisture cell, transfer augers from hopper to grain tank, and an air delivery system to hopper or tank.

SPECIFICATIONS

SPC20 RESEARCH COMBINE

DRIVE

Hydrostatic	Forward and Reverse
Deutz Engine	75 hp
Fuel Tank	25 gal
Brakes	Hydraulic Fail-Safe
Front Tires	11-2 x 24
Rear Tires	8.5L - 14

THRESHING

Speed	Variable
Hydraulic Cylinder	8 Metal Raspbar
Cylinder Diameter	15"
Cylinder Length	31.5"

LIGHTING

Interior Inspection Lights	Yes
Front and Rear Lighting	Yes

SEPARATION

Upper Sieve	30" x 55"
Lower Sieve	30" x 47.5"
Winnowing Blower	Variable Speed
Rebound Prevention	Fixed Curtains
Air Column Cleaner	Yes

SEED HANDLING

Operator Capacity	1-2 People
Delivery to Bagging Station	Pneumatic
Cyclone Seed Hopper	Optional
Sample Sack Holder	Optional

HEADER OPTIONS

Header Height Control	Hydraulic
Compatible Headers	2-Row Corn 2-Row Row Crop 2-Row Floating



MACO

⚠ DANGER

⚠ DANGER

OPERATOR'S MANUALS

⚠ DANGER

NOTICE

NOTICE

MAXIMS



HP5 SINGLE-ROW PLOT COMBINE

WORLD'S ONLY ONE-ROW MULTI-CROP PLOT COMBINE

COMPACT, LIGHTWEIGHT, AND POWERFUL

In a class of its own, HP5 is the world's only one-row, multi-crop combine. Multiple interchangeable headers adjust to most crop types: Standard Platform Header, Single-Row Row Crop Header, and Single-Row Corn Header.

Its compact size and low weight provide maximum maneuverability and easy transportation. The narrow wheelbase and one-person operating system are ideal for harvesting single rows of micro, hill, or nursery plots. The HP5 is specifically designed to harvest up to 30,000 single-row plots per season.

The small frame of the HP5 provides big performance with a powerful Deutz air-cooled diesel engine. The extended single sieve promotes excellent crop exposure for complete separation and recovery.

SINGLE ROW PLOT HARVESTER

HP5 HARVEST PRO RESEARCH COMBINE



DATA CAPTURING

Includes an aluminum clam shell weigh hopper with load beam and moisture probe. The D1 Data Collection Unit can be used for weight and moisture analysis, data capturing, and data downloading.

VOLUMETRIC CYLINDER

The volumetric cylinder is a seed handling option for volume measurements. It is equipped with a manual or electrical control valve for bagging or discarding seed samples.

ALL-TERRAIN

An all-terrain package is available for operations with challenging field conditions. In addition to the standard 40 hp engine, the package includes upgraded tires and a true four-wheel drive system.

SPECIFICATIONS

HP5 SINGLE-ROW PLOT COMBINE

DRIVE

Hydrostatic	Forward/Reverse
Deutz Engine	40 hp
Fuel Tank	11 gal
Brakes	Hydraulic Fail-Safe
Front Tires	26 x 12 x 12
Rear Tires (power steer)	23 x 10.5 x 12

THRESHING

Speed	400 - 1100 rpm
Mechanical Cylinder	8 Metal Raspbar
Cylinder Diameter	13.25"
Cylinder Length	17.5"

SEED HANDLING

Operator Capacity	1 Person
Delivery to Driver	Pneumatic

TRANSMISSION

Hydrostatic	0 - 7 mph
-------------	-----------

TRANSMISSION

Hydrostatic	0 - 7 mph
-------------	-----------

DIMENSIONS

Length	16'
Width	52"
Height	87"
Weight	3,400 lbs

HEADER OPTIONS

Header Height Control	Mechanical
Compatible Headers	1-Row Corn 1-Row Row Crop Platform Heads



ON MACHINES WITH ELECTRONICS, THE BATTERY MUST BE DISCONNECTED TO AVOID DAMAGE TO ELECTRONICS. MAY RESULT IN DAMAGE TO ELECTRONICS.

STANDARD LUBRICANTS
CHAIN LUBE

A blue-tinted photograph of a combine harvester in a field. The harvester is positioned in the middle ground, facing right. In the foreground, there are large piles of harvested grain, likely corn, on a tarp. The background shows a vast field under a clear sky with distant hills.

THRESHERS AND SHELLERS





BT-14 SINGLE PLANT BELT THRESHER

SAFE AND EFFICIENT THRESHING

PURE SAMPLES WITH GENTLE SEED PROTECTION

Designed for operator safety, wide rubber belts gently remove seed from single plant materials for pure seed samples and with minimal seed damage. Multiple belt configurations support multi-crop capabilities, including soybeans and other crops with podded grain or heads of grain.

Single plants enter through the feeding chute and a side collection chute delivers the clean, pure seed sample for better harvest data. A single operator can run the BT-14 and the air column cleaning system makes clean out a quick processes.

SPECIFICATIONS

BT-14 SINGLE PLANT BELT THRESHER

CROP CAPABILITIES

Podded Grains or Heads of Grains

THRESHING BELTS

14" Wide

POWER SOURCE

60 Hz Electric Motor - 110V - 3/4 hp

FEATURES AND COMPONENTS

Multi-crop Capabilities

Adjustable Clearance Between Belts

Air Column Cleaning System

Feed Chute with Side Delivery

Trash Containment Curtain

Hinged Safety Cover

SAE Standard Size Drive Components/Parts



Contact us at almaco.com for more information or a quote today!



SMALL BUNDLE THRESHER

LARGE CAPABILITIES IN A SMALL PACKAGE

EFFICIENT THRESHER FOR PURE SEED SAMPLES

The ALMACO Small Bundle Thresher (SBT) has four interchangeable screens for multi crop capabilities including cereals, grasses, sorghum, edible beans, soybeans, barley, hemp, and more. While the SBT is a compact machine, it has a large threshing capacity of about 120 pounds per hour. A large feeder housing and threshing cylinder increase efficiency without sacrificing sample purity.

With self-cleaning capabilities, the SBT is low maintenance and simple to use. Truck-style handles are ergonomic, the ball-bearing semi-pneumatic wheels make it easy to move, and an auxiliary beater/straw puller delivers clean samples every time.

SPECIFICATIONS

SMALL BUNDLE THRESHER

CROP CAPABILITIES

Multi-crop: Made for Small Grains

THRESHING CYLINDER

Metal raspbar
Round spike cylinder
Rubber coated MRB cylinder
Rubber V-belt raspbar cylinder
Square spike cylinder

POWER SOURCE OPTIONS

1 HP 220V 50HZ electric motor
1 HP 220V 60HZ electric motor
1 HP 110V 60HZ electric motor
3.5 HP B/S Gas engine
4 HP diesel engine
4 HP Honda gas engine

FEATURES AND COMPONENTS

Multi-crop Capabilities

Large Feed Housing and Threshing Cylinder

Four Interchangeable Screens

Auxiliary Beater and Straw Puller

Removeable Cleaning Pan

Grain Catch Pan

Self-Cleaning Capabilities



Contact us at almaco.com for more information or a quote today!



MAIZER

SINGLE OR BATCH EAR CORN SHELLER

PROTECTS KERNELS WITH NO CARRY-OVER

The ALMACO Maizer is designed for single or small-batch corn shelling. The Maizer minimizes seed damage by using a durable rubber belt system. When sample purity is required, the Maizer is the best choice with excellent clean-out capabilities and no carry-over between samples.

With the lowest kernel carry-over, the Maizer is the industry's safest whole-ear corn sheller, providing fast, efficient shelling. Protective shielding keeps operators safe, and the ease of use reduces the risk of injury due to operator fatigue.

The Maizer is low maintenance and simple to use with self-cleaning capabilities. The modular design allows for easily added options and is compatible with other ALMACO solutions like cob conveyors or seed transfer systems.

SPECIFICATIONS

MAIZER

CROP CAPABILITIES

Corn Only

CYCLE TIME

5 - 15 Seconds

DIMENSIONS

Height	61"
Width	32"
Length	72"
Weight	750 lbs

FEATURES AND COMPONENTS

Rubber Belt Shelling to Protect Seed

No Sample Carry-Over for Better Data

Simple Transgenic Cleanout Inspection

Durably Built and Made to Last

Low Maintenance for Greater Uptime

POWER SOURCE OPTIONS

110V, 20 amp Standard;
220V, Single Phase, (50HZ, 60HZ Available)



Contact us at almaco.com for more information or a quote today!



MAIZER SES

SINGLE EAR CORN SHELLER

PROTECTS KERNELS AND MINIMIZES DUST

The ALMACO Maizer SES is a single-ear sheller specifically designed to shell corn very gently to minimize seed damage and dust compared to alternative systems. The machine uses rubberized husking rollers which gently remove kernels from the cob gently. Cobs are processed in about two seconds and the self-cleanout keeps seed samples pure. The Maizer SES is available with an operator stand or as a table-top model to suit multiple operational needs.

With the lowest kernel carry-over, the Maizer SES is the industry's safest single-ear corn sheller, providing fast and efficient shelling. The Maizer SES is quiet to operate and is equipped with all safety features as outlined for EHS standards.

SPECIFICATIONS

MAIZER SES

CROP CAPABILITIES

Corn Only

CYCLE TIME

2 Seconds

DIMENSIONS

Height	15.5"
Width	19.5"
Length	20.4"
Weight	122 lbs

FEATURES AND COMPONENTS

Rubberized Husking Rollers Gentle on Seed

Site Glass for Easy Process Evaluation

Simple Operation for Ease of Use

EHS Standard Safety Features

Low Maintenance for Greater Uptime

Self-Cleaning for No Carry-Over

POWER SOURCE OPTIONS

Single-Phase Electric Motor



Contact us at almaco.com for more information or a quote today!



SMALL VOGEL PLOT THRESHER

SINGLE PLANT AND CROP HEAD PROCESSING

PROTECTS SEED AND PROVIDES CLEAN SAMPLES

The ALMACO Small Vogel Plot Thresher (SVPT) is specifically designed for harvesting single plants and heads of various crops. The SVPT is a multi-crop thresher and will adapt to most types of grain by using interchangeable cylinders and concaves. Common crops harvested with this machine include cereals, grasses, sorghum, edible beans, soybeans, and more.

With self-cleaning capabilities, the SVPT is low maintenance and simple to use. The modular design of the SVPT allows for a high level of customization to meet the unique needs of seed research operations.

SPECIFICATIONS

SMALL VOGEL PLOT THRESHER

CROP CAPABILITIES

Single Plants and Heads of Grains

CYLINDER/CONCAVE OPTIONS

Metal Raspbar Cylinder with Concave

Round Spike Cylinder with Concave

Rubber Coated MRB Cylinder with Concave

Square Spike Cylinder with Concave

POWER SOURCE OPTIONS

3/4 HP 220V 50Hz Electric Motor

3/4 HP 110V 60Hz Electric Motor

4 HP Honda Gas Engine

FEATURES AND COMPONENTS

Grain Rebounding Baffle

Auxiliary Beater and Strawpuller

Wooden Base with Steerable Assembly

Grain Catch Pan and Sick Sacking Chute

Low Maintenance for Greater Uptime

Self-Cleaning for No Carry-Over



Contact us at almaco.com for more information or a quote today!



LARGE VOGEL PLOT THRESHER

HIGH-VOLUME AND MULTI-CROP

FAVORITE OF RESEARCHERS AROUND THE WORLD

The ALMACO Large Vogel Plot Thresher (LVPT) is a high-volume machine ideal for threshing small grains, cereals, forages, and legumes. The LVPT is a multi-crop thresher and will adapt different types of grain by using interchangeable cylinders. Simple operation, low maintenance, and easy interior inspection make the LVPT a favorite of seed researchers throughout the world.

The LVPT harvests seed with a focus on gentle seed-handling and clean samples from plot to plot. With self-cleaning capabilities and a modular design, the LVPT can be customized to meet the unique needs of the seed research industry.

SPECIFICATIONS

LARGE VOGEL PLOT THRESHER

CROP CAPABILITIES

High Volume Multi-crop

CYLINDER/CONCAVE OPTIONS

Metal Raspbar Cylinder

Rubber Raspbar Cylinder

Spiked Tooth Cylinder

POWER SOURCE OPTIONS

5 HP 220V 50Hz or 60Hz Electric Motor

9 HP Gas Engine with Electric Start

10 HP Diesel Engine with Electric Start

FEATURES AND COMPONENTS

Operator Platform with Easy Access Ladder

Winnowing Blower, Shaker Pan, and Tail Rake

Pneumatic Delivery of Seed to Operator

Rubber Cushioned Axle

Low Maintenance for Greater Uptime

Self-Cleaning for No Carry-Over



Contact us at almaco.com for more information or a quote today!



LOW PROFILE PLOT THRESHER

LARGE-VOLUME AND VERSATILE

POWER OF A PLOT COMBINE IN A SIMPLE THRESHER

The ALMACO Low Profile Plot Thresher (LPR) is a large volume harvesting machine and is the preferred solution when duplicating results obtained with commercial combines. The harvest capacity for the LPR is between 1,800 - 2,000 pounds of threshed grain per hour.

The LPR can handle a board range of crop types including corn, soybeans, sunflowers, cereals, small grains, legumes, forage crops, hemp, and more. Simple modifications to threshing cylinders and sieves make the LPR the most versatile thresher. Simple to use and easy to maintain, the LPR provides a positive and safe user experience.

SPECIFICATIONS

LOW PROFILE PLOT THRESHER

CROP CAPABILITIES

High Volume Multi-crop

CYLINDER OPTIONS

Metal Raspbar Cylinder

Rubber Raspbar Cylinder

Spiked Tooth Cylinder

SIEVES AND CONCAVES

6mm - 22mm Sieves - Multi-crop

Grass and Standard Seed Concaves

SIEVES AND CONCAVES

6mm - 22mm Sieves - Multi-crop

Grass and Standard Seed Concaves

FEATURES AND COMPONENTS

Seven Power Source Options

Variable Speed Drive with Electric Clutch

Seed Chute with Air Delivery

Galvanized Metal Shaker Pan

Contact us at almaco.com for more information or a quote today!





LARGE PLOT THRESHER

HIGH-CAPACITY AND BULK THRESHING

LEADER IN SEED PURITY AND REGULATION WORK

The ALMACO Large Plot Thresher (LPT) is a high-capacity, bulk harvesting machine. The LPT has the threshing power of a plot combine but is small enough to tow. Most commonly used in regulated work and seed purity, the LPT allows for easy cleanout with no seed carryover.

The LPT is a multi-crop thresher and can handle a range of crops including soybeans, cereals, wheat, grasses, forages, sorghum, hemp, and more. Simply change threshing cylinders and concaves for different crops. The LPT can process large plots with a capacity between 1,800 - 2,000 pounds of threshed grain per hour.

SPECIFICATIONS

LARGE PLOT THRESHER

CROP CAPABILITIES

High Volume Multi-crop

CYLINDER OPTIONS

Metal Raspbar Cylinder

Rubber Raspbar Cylinder

Spiked Tooth Cylinder

SIEVES AND CONCAVES

6mm - 22mm Sieves - Multi-crop

FEATURES AND COMPONENTS

Customizable for Multi-crop Needs

Winnowing Fan

Variable Speed Drive with Electric Clutch

Rubber Cushion Torsion Axle Assembly

Six PowerSource Options

Low Maintenance V-Belt Drives

Torsion Axle

Seed Handling Chute with Air Deliver

Contact us at almaco.com for more information or a quote today!



HARVEST ELECTRONICS

D1

ALMACO



MOBILE DEMAND

DURABLE FIELD-TESTED TABLET

TOUCH SCREEN DISPLAY MADE TO LAST

The 7" Mobile Demand Touchscreen is ALMACO's latest fully-rugged tablet platform for the HarvestHD system. Mobile Demand provides a user-friendly interface, is sunlight viewable, and is military hardened for problem-free use. Experience the functionality of a tablet and the full Windows operating system of a computer.

FEATURES AND COMPONENTS

7" High Resolution Touchscreen

Sunlight Readable

Drop, Shock, Water, and Dust Resistant

Compatible with SkyTrip Planting System





VANTAGE HD HARVEST SOFTWARE

DATA COLLECTION SOFTWARE

SIMPLE TO USE FOR RELIABLE DATA

The VantageHD harvest data collection software has been developed to capture plot data as well as control harvester plot processing functions. The software is designed to run on any Windows 7 computer, but the Mobile Demand T7200 is the preferred device.

FEATURES AND COMPONENTS

Harvest Mapping

Moisture and Weight Calibration

Single, Dual, and Test Weight

Packaging

Strip Trial

Harvest Max for Nonstop Machines

Bar Code/CAC Reader

Windows Operating System



D1 DATA COLLECTION UNIT

HARVEST DATA ACCURACY MEETS DURABILITY

REAL-TIME RESULTS ON THE GO

The ALMACO D1 Harvest Data Collection Unit has a modern design with readily available parts and components to protect your uptime. An upgrade from an LRX to a D1 is cost effective and requires no change to your current weigh system, load cell, or moisture blade.

D1 provides accurate yield data on the go and in real time, including test weight, plot weight, and moisture data. With exceptional durability and an intuitive user interface, D1 is the solution for accurate data and faster advancement decisions.

EQUIPMENT COMPATIBILITY

D1 is a solution compatible with plot combines, seed processing lines, and individual threshers. It can be used with both ALMACO ASP and APx packagers.

D1: HARVEST DATA YOUR WAY

BETTER DATA FOR FASTER ADVANCEMENT DECISIONS



DURABLE DESIGN

No need to remove the data collection unit in poor weather, during transportation, or overnight storage. D1 is water resistant, rust-resistant, dust-resistant, and capable of operating at temperatures up to 185° F (85° C) and down to -40° F (-40° C).

STANDARDIZED ARCHITECTURE

D1 has no internal battery which requires less maintenance and removes any risk for losing curves due to power loss. The unit is compatible with electric and pneumatic actuators for added flexibility and is a simple replacement for other similar bucket systems.





MULTI-CROP VERSATILITY

Capture multi-crop harvest data your way, all from a single solution. D1 can measure yield data for virtually all crop types including corn, soybeans, wheat, sorghum, canola, sunflowers, and more. No matter the crop, D1 measures with accuracy and precision.

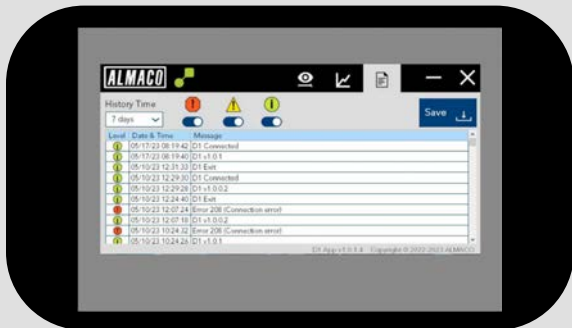
EASY INTEGRATION AND LEADING VISIBILITY

No extra display or additional unit controls! D1 can be placed out of sight for improved operator visibility and safety. The unit is completely controlled from the existing Vantage HD combine software and installation is a simple process.



INTUITIVE USER INTERFACE

MODERN SOLUTION WITH LEADING ACCURACY



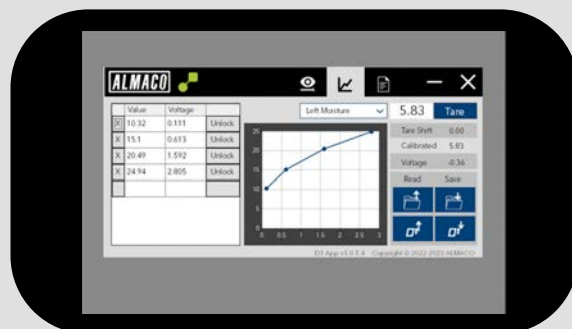
INTUITIVE TO USE

The D1 interface is simple to use, easy to navigate, and includes built-in diagnostics for greater uptime. With an intuitive design, use less time training staff and more time gathering data in the field.



SIMPLE TO CALIBRATE

ALMACO calibration is a simple process with easy calibration guides built into the system. Calibration supports any size moisture blade for client accuracy specifications—including large moisture blades for the high data precision.



DEPENDABLE ACCESS TO CURVES

Moisture and weight curves are stored in the Vantage HD software and not the D1 control box. No need to switch units between combines; simply use the Vantage HD in a combine, or transfer curves between them.

SPECIFICATIONS

D1 DATA COLLECTION UNIT OVERVIEW

WEIGHT

Multiple Sample Sizes	+/- 0.01 lbs
Multiple Hopper Sizes	Yes
Multiple Weight Options	Yes

MOISTURE

0-25%	+/- 0.50%
25-30%	+/- 1.00%
30-35%	+/- 1.50%

TEST WEIGHT

95% of Samples	+/- 0.80 lb/bu
----------------	----------------

STABILIZATION TIME

Initial Reading Speed	~ 1.80 sec
-----------------------	------------

CYCLE TIME

20 Foot Plots - Dual	6-10 sec
----------------------	----------



CONTACT US

For more information or to request a quote, connect with our team today at almaco.com.

HARVEST ACCESSORIES



PACKAGING SYSTEMS



ASP - SINGLE/DUAL

Single or dual bag/tag system for legacy combines



APx ADVANCED

Automated seed bag/tag system for single/dual plots



IN-CAB BAGGING

In-cab bagging funnel and sub-sampler solution



PACKAGER BAGS

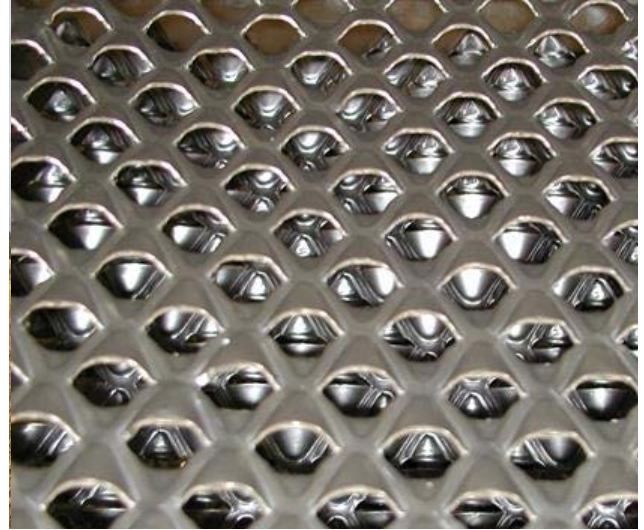
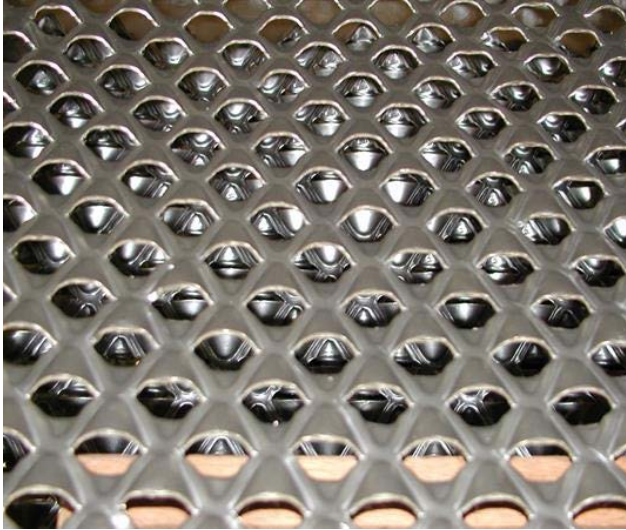
Grain and seed bags including tracking tags



DUMP HOPPER

Hydraulically operated dump hopper for samples

SIEVES



GRAEPEL LOWER SIEVES

6mm Sieves	Grass or Fine Seed Varieties
10mm Sieves	Wheat/Cereals
14mm Sieves	Dry Beans/Small Soybeans
16mm Sieves	Soybeans
Dual Zone Sieves	Adjustable and used primarily for corn

GRAEPEL UPPER SIEVES

24mm Sieves	Wheat/Cereals
32mm Sieves	Soybean/Dry Beans or High Foliage Plants
Dual Zone Sieves	Adjustable and used primarily for corn

DEVITALIZATION



LEGACY DEVITALIZER

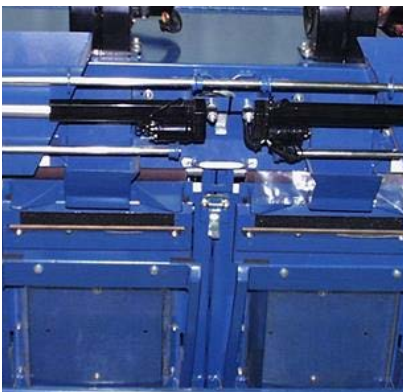
Seed grinder for regulated crops in legacy harvesters



ROLLER MILL GRINDER

Seed grinder for regulated crops in R-Series Combines

STRAW CHOPPERS



LEGACY STRAW CHOPPER

Straw chopper designed for legacy harvesters



R-SERIES CHOPPER

Straw chopper designed for R-Series Combines

HOPPER SYSTEMS



HYDRAULIC DUMP

Transfers bags or bulk samples from combine.



WEIGH SYSTEM

Weigh hopper system with options of 1/4 bu - 1 bu

SEED DELIVERY



AIR DELIVERY CYCLONE

Stage and slow seed before data collection



ALMACO
CONTACT US

EMAIL

SALES

sales@almaco.com

SERVICE

service@almaco.com

PHONE

NORTH AMERICA HEADQUARTERS

(515) 382-3506

BRAZIL FACTORY & SERVICE CENTER

(55) 34-3213-3036

ARGENTINA SERVICE CENTER

(54) 9-2352-527268

FOLLOW US





ALMACO

INNOVATING SEED RESEARCH

BEYOND THE FIELD