

THE REVOLUTION CONTINUES!



ALMACO
INNOVATING SEED RESEARCH
...BEYOND THE FIELD

515-382-3506
sales@almaco.com
www.almaco.com

R2
TWIN



MULTI-CROP.
TWIN-PLOT COMBINE.
REVOLUTIONIZED.

ALMACO
INNOVATING SEED RESEARCH
...BEYOND THE FIELD

TWIN-PLOT, MULTI-CROP, TOP-FED AXIAL ROTOR TECHNOLOGY

Undisputed Data Quality, Faster Harvest

Patent-pending twin, top-fed axial rotor system delivers up to 100% gain in harvesting capacity

Minimal Carry-Over, Cleaner Samples

Exclusive Air-Lock technology delivers up to 100% more grain volume than competitive alternatives



Spacious (106 cu. ft.) and quiet (62dB), 2-person cab with curved glass windshield

Twin data collection system

High-speed unload auger (unload rate 2.9bu/sec)

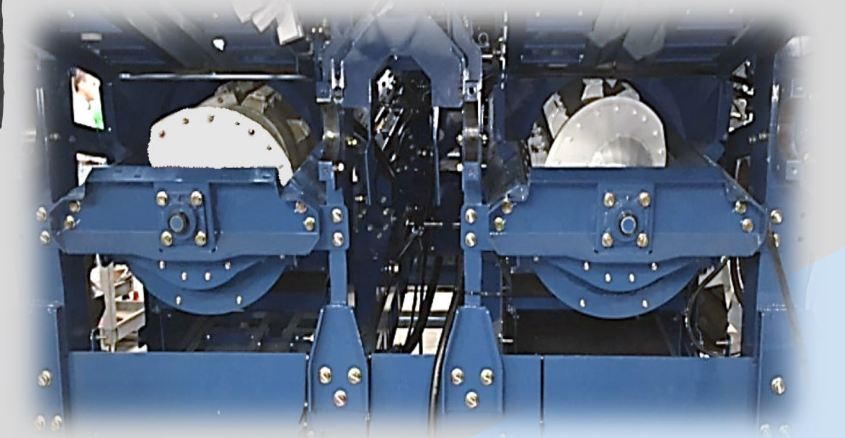
300bu grain tank



275HP tier 4 diesel

Three-speed hydraulic ground drive w/brakes (~20mph)

Twin top-fed axial rotors are 100% physically separated and independently driven



Row Crop Header

Corn Header

Quick-change header design for multi-crop applications. Header change in ~2-3min.

“Smart Headers”

Combine recognizes which head is installed

Plus+1® Micro-Controller Operating Platform

- Electronic, one touch adjustment and control of all system functionality
- Integrated audio/visual safety, warning, and diagnostic features
 - Near infinite digital expandability



Criteria	Sample Cleanliness	Seed Damage	Plot Harvest Time (20ft Plots)	Bulk Harvest Speed-Soy	Bulk Harvest Speed-Corn	Carry-Over in 25lb Sample	Plot Loss
R2	~99%	~1%	<11 sec	~4mph	~5mph	~.05lbs	< 1%
Competitive Alternative	~97%	~2.5%	<22 sec	~2.5mph	~3mph	~.6lbs	~2%